

LOTYLDA PMM – TERMINAL

Production and Maintenance Monitor

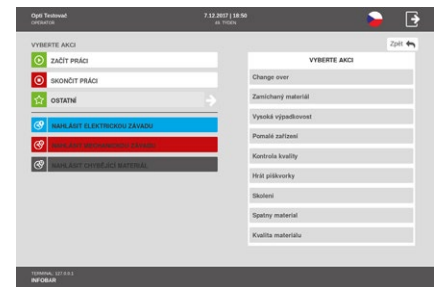
ABOUT TERMINALS

PMM terminal application is for **touch production terminals**. It helps to **visualize important information** for operators as well as the re-entering the data by operators and other participants of the production process, for example tool-setters, maintenance workers or quality controllers. Optional touch terminals placed near the production lines or near the production lines clusters can be used for operators' registration at the workplace, defect reports, missing supplies reports as well as the ineffective activities reports. Terminals can be equipped with employee card scanners and barcode scanners to load work tasks and individual operations. Individual work tasks can also be selected from the on-line list at the terminal.

HUMAN RESOURCES

Each production worker logs in and logs off to the workplace with the optional qualification check. If the worker fails the qualification requirements, the worker is alerted to ask the foreman to organize a training session. At the end of the shift qualification may or may not be awarded to each individual worker. If

needed, the terminal can be equipped with a camera for recording the log in process for indisputable identification purposes. Alcohol sensor can be added to the terminal. The terminal is controlled by individual roles of the users. Each role contains customized view and menu content.

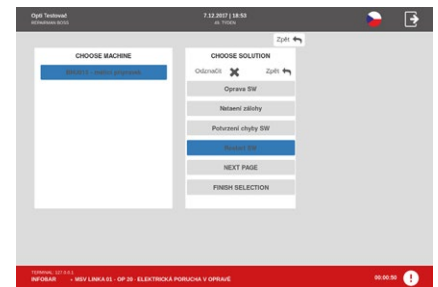


PRODUCTION MACHINERY AND MAINTENANCE

The terminal is used for manual reporting of defects by the operator and the foreman.

Terminal maintenance overtakes the defect management and finalizes the repair by choosing one of the possible preset types of defects and repair solutions.

The terminal is also used to handle scheduled maintenance tasks. The individual tasks are shown on the terminal as a checklist that must be completed by the maintenance worker.



MANUAL DATA COLLECTION FROM THE PRODUCTION

The system allows:

- to launch and terminate production operations and orders
- to write off the products
- to write off the waste with the selection of the cause and origin
- to assign the reasons and causes of automatically detected downtime

- to assign the reasons and causes of auto-detected performance decrease and non-compliance with time standards
- to display instructions, technological procedures and adjustments sheets for production
- to display instructions for quality control and writing off the measurement results



PRODUCTION INFORMATION

Terminals can also be used to **view current status of connected machines** and fulfillment of production plans and key indicators of performance, such as downtime, performance, quality, OEE.

